

HELSINKI MUSIC CENTER CONCERT HALL

HELSINKI, FINLAND
2011

**NAGATA
ACOUSTICS**

Acoustic Consultant:	Nagata Acoustics
Architect:	Arkkitehtitoimisto Laiho-Pulkkinen-Raunio
Owner:	Kiinteistö Oy: State of Finland (48%) City of Helsinki (28%) Finish Broadcasting Company (26%)
Main User:	Helsinki Philharmonic Orchestra (HPO) Finnish Radio Symphony Orchestra (FRSO) Sibelius Academy (SibA)
Construction Cost:	188 million EUR

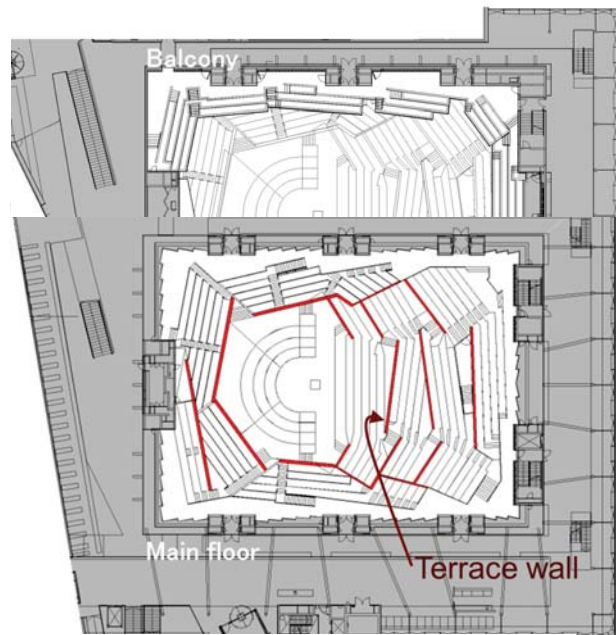
The Helsinki Music Centre was built in the central district of the city of Helsinki, between Finlandia Hall (Alvar Aalto, architect), and the contemporary art museum, Kiasma (Steven Holl, architect). The National Parliament of Finland stands across the street from the Centre.

The 1,704-seat concert hall forms the core of the building. In addition to the concert hall, there are six small halls ranging from 140–400 seats and the Sibelius Academy premises. The function and acoustics in each small hall has been designed to serve a different program: orchestra rehearsal, organ, chamber music, vocal music, black box, and lecture.

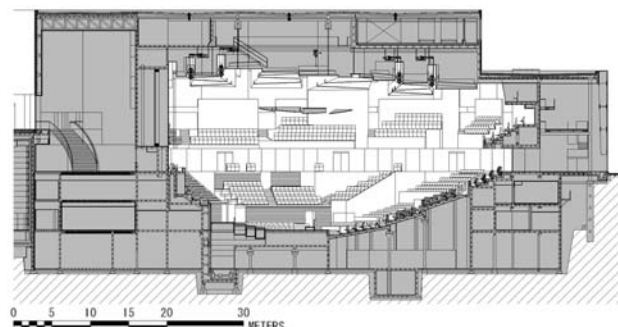
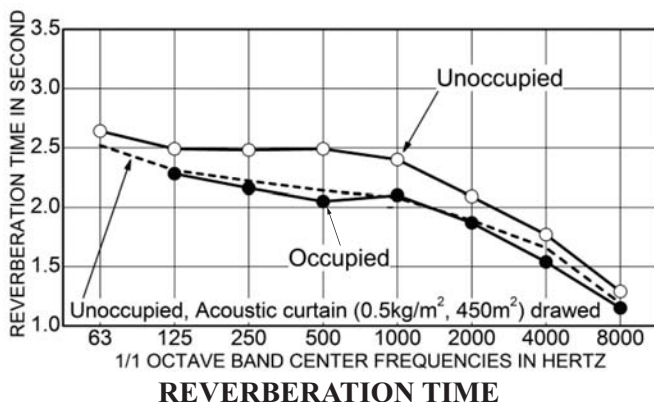
The Centre is owned jointly by the state of Finland, the City of Helsinki, and the Finnish Broadcasting Company (YLE), and the main users of the centre are the Helsinki Philharmonic Orchestra (HPO), the Finnish Radio Symphony Orchestra (FRSO), and the Sibelius Academy.

BUILDING DETAILS AND ACOUSTIC DATA

Location	Mannerheimintie 13a, Helsinki, Finland
Building Size	38,600 m ²
Concert Hall:	
Seating Capacity	1,704
Room Volume	24,000 m ³
Reverberation Time (Mid-Frequency)	
Unoccupied	2.5 sec
Occupied	2.1 sec
Finish Materials	
Ceiling	: Painted fiberglass cloth on concrete.
Walls	: Wood work with random groove on concrete, Wood grill, Glazing
Aud. Floor	: Wood flooring on concrete
Stage Floor	: Finnish pine
Canopy	: Painted fiberglass cloth on concrete
Noise Level	: NC < 15



PLAN



LONGITUDINAL SECTION

HELSINKI MUSIC CENTER CONCERT HALL

HELSINKI, FINLAND
2011

NAGATA
ACOUSTICS

Music Facilities

1. Concert Hall (1,704)
2. Orchestra Rehearsal (240)
3. Organo (for pipe organ, 140)
4. Camerata (for chamber music, 240)
5. Sonore (for vocal, 206+78)
6. Black Box (225-400)
7. Auditorium (82)
8. Sibelius Academy:
Lesson/Practice rooms, Studios
9. Artist rooms for HPO & FRSO

