

# PERFORMING ARTS CENTER AT BARD COLLEGE

ANNANDALE-ON-HUDSON, NEW YORK, U.S.A.  
2003

**NAGATA  
ACOUSTICS**

Acoustics Consultant:

Nagata Acoustics, Inc., Robert F. Mahoney & Associates

Architect:

Frank O. Gehry (Gehry Partners, LLP)

Owner:

Bard College

Construction Cost:

\$60 Million

The Richard B. Fisher Center for the Performing Arts with Frank O. Gehry's highly sculptural exterior is located on the campus of Bard College in Annandale-on-Hudson, about 200 km north of New York City. It is an amazing achievement for this small liberal arts college with 1450 students to build a world-class performing arts center that cost them \$60 million. This vision of making Annandale an international destination for music-lovers came from Dr. Leon Botstein, the president of Bard College since 1975.

## BUILDING DETAILS AND ACOUSTICS DATA

Location 82 Manor Avenue  
Annandale-on-Hudson, NY 12504

Seating Capacity 900

Room Volume 9,040 CM

Reverberation Time (Mid-Frequency)

Unoccupied 1.9 sec (Concert Configuration)

1.3 sec (Opera Configuration)

Occupied 1.7 sec (Concert Configuration)

1.1 sec (Opera Configuration)

Finishing Materials

Ceiling : Plywood

Wall : Concrete

Floor : Concrete

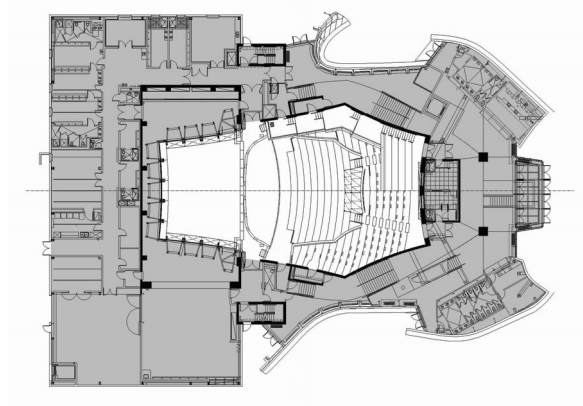
Seat : Upholstered

Noise Level : NC - 15

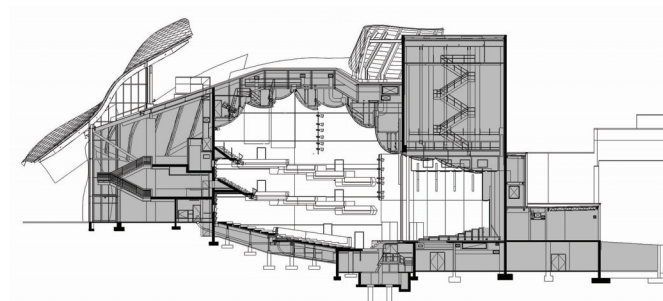
Total Cost : \$60 Million

Total Floor Area : 10,220 SM

## PLAN

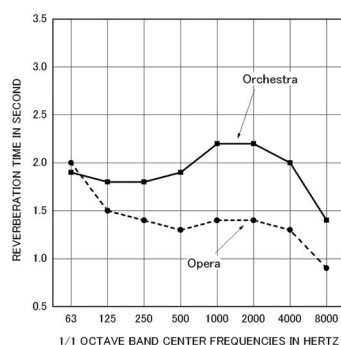


## LONGITUDINAL SECTION

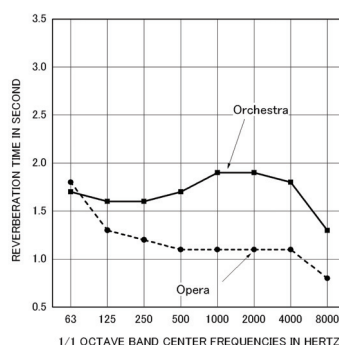


## REVERBERATION TIME

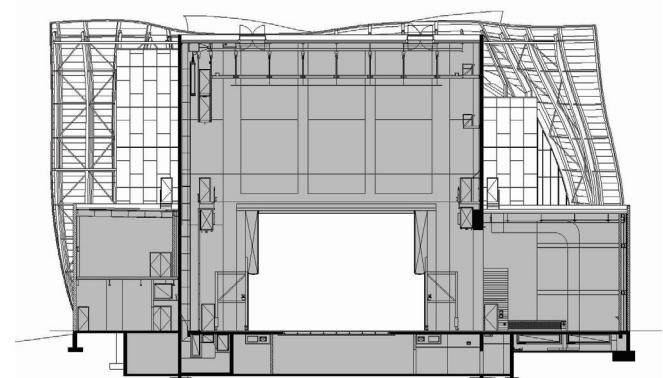
### UNOCCUPIED



### OCCUPIED



## TRANSVERSE SECTION





# PERFORMING ARTS CENTER AT BARD COLLEGE

ANNANDALE-ON-HUDSON, NEW YORK, U.S.A.

2003

NAGATA  
ACOUSTICS

